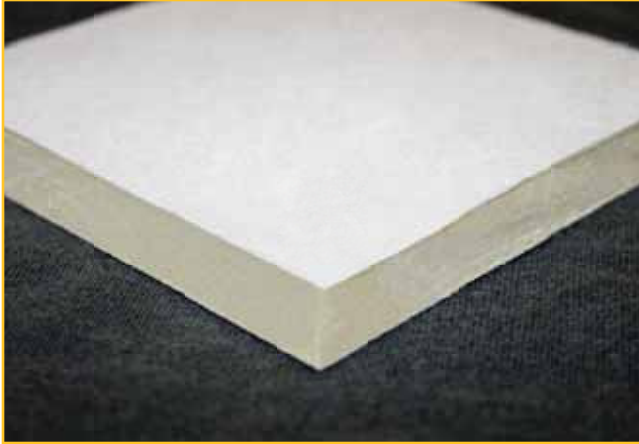


CARLISLE'S SECURSHIELD HD



Overview

SecurShield™ HD is a rigid, roof insulation panel composed of a high-density, closed-cell polyisocyanurate foam core laminated to a premium-performance, coated-glass fiber-mat facer.

Features and Benefits

- Premium glass facer improves resistance to fire, moisture and foot traffic
- Easy to cut and handle for installations with numerous penetrations
- At 9 lbs per 4' x 8' panel versus 80 lbs for gypsum alternatives, SecurShield HD is lightweight and easy to install
- Easy and cost-effective access for shipments from all Carlisle polyisocyanurate plants
- High-density formulation achieves FM severe hail rating
- Glass mat facer provides strong bond for adhered re-roofing applications
- Approximately 5x higher R-value than ½" gypsum cover boards and 2x higher R-value than ½" wood fiber boards

Product Characteristics

- Panel size: 4' x 8'
- Panel thickness: ½"
- Pieces per pallet: 96

Applications

SecurShield HD is designed as a cover board over a variety of substrates for re-roofing and new construction applications.

Physical Properties

SecurShield HD Typical Physical Properties		
Property	Test Method	Value
Compressive Strength	ASTM D1621	100 psi minimum 690 KPA
Dimensional Stability	ASTM D2126	<0.5% linear change (7 days)
Water Absorption	ASTM C209	< 3% volume
R-value	ASTM C518	2.5
Thickness		½"
Service Temperature		260°F or less 126°C or less

Code Approvals

- FM 4450 and FM 4470*
- UL 790
- UL Classified

Precautions

Insulation must be protected from open flame and kept dry at all times. Install only as much insulation as can be covered the same day by completed roof-covering material. Carlisle will not be responsible for specific building and roof design by others, for deficiencies in construction or workmanship, for dangerous conditions on the jobsite or for improper storage and handling. Technical specifications shown in this literature are intended to be used as general guidelines only and are subject to change without notice. Call Carlisle for more specific details or refer to PIMA Technical Bulletin No. 109: Storage and Handling Recommendations for Polyiso Roof Insulation.

LEED® Info

Post-industrial Recycled Content < 9%

Manufacturing Locations
 Smithfield, PA
 Franklin Park, IL
 Tooele, UT
 Terrell, TX
 Lake City, FL

CARLISLE'S SECURSHIELD HD

Installation

Mechanically Attached Single-Ply Systems

Each SecurShield HD panel must be secured to the substrate with approved Carlisle fasteners and plates. Butt edges and stagger joints of adjacent panels. Install the roof membrane according to Carlisle specifications.

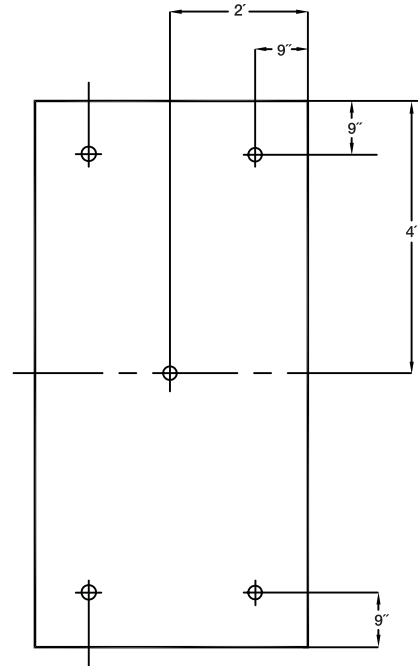
Fully Adhered Single-Ply Systems

Each SecurShield HD panel must be secured to the substrate with fasteners and plates (appropriate to material type.) Butt edges and stagger joints of adjacent panels. Install the roof membrane according to Carlisle specifications.

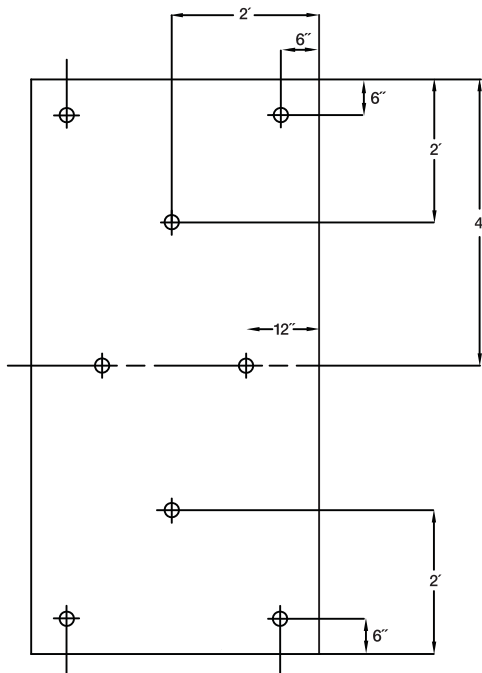
For projects where reductions in thermal bridging are sought, SecurShield HD panels can be secured to the substrate with Carlisle's Flexible FAST™ or standard FAST™ Adhesive.

Carlisle-Approved Fastening Patterns

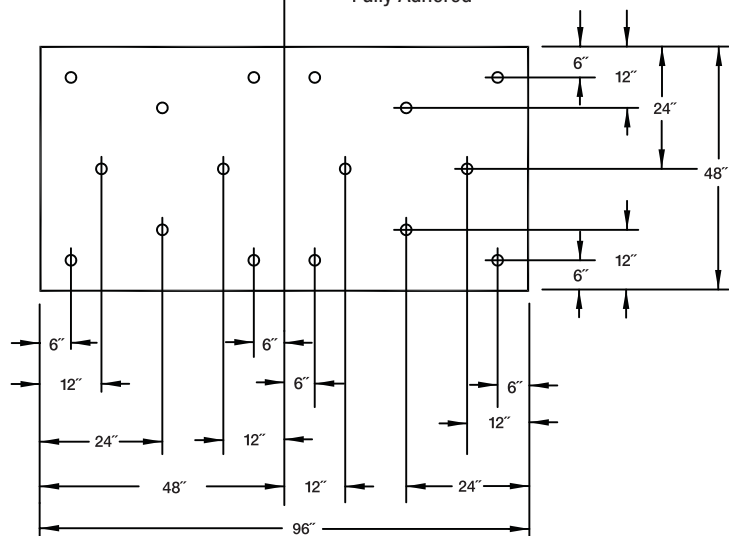
Mechanically Fastened – New Construction



Mechanically Fastened – Retrofit



Fully Adhered



*Consult FM RoofNav for approved assemblies

Investing in Roofing Solutions for Over 45 Years

800-4-SYNTEC • P.O. Box 7000 • Carlisle, PA 17013 • Fax: 717-245-7053 • www.carlisle-syntec.com

Carlisle, SecurShield, Flexible FAST and FAST are trademarks of Carlisle. LEED is a registered trademark of the U.S. Green Building Council.
REPRINT CODE: 605075 - "SecurShield HD Product Data Sheet" - 021910 © 2010 Carlisle.

CARLISLE
Carlisle SynTec